

The background of the slide is a photograph of a bright blue sky filled with soft, white, fluffy clouds. The clouds are scattered across the frame, with some larger clusters and some wispy streaks. The overall tone is bright and airy.

HDTMC Company Introduction

CONTENTS

Our passion leads
you to succeed!!



- I. Outline
- II. History
- III. Factory Layout
- IV. Organization
- V. Group Core Value & Business area
- VI. Turnover
- VII. Products
- VIII. Facilities
- IX. Affiliated Company



I. Outline

Our passion leads
you to succeed!!



- ❖ Establishment : Jul.1991.
- ❖ Company Name: Hyundai TMC(Hyundai Technology Machinery Co.,)
- ❖ CEO: Lee, Su-Tae
- ❖ Main Office & Factory : 60-6,Palyong-Dong,Uichang-Gu
Changwon, Kyungsangnam-Do,Korea
- ❖ Capital :3.5 bkrw (3.14 musd)
- ❖ Land Area : 4,500 pyung(14,850 m²)
- ❖ Main Products: Heavy Construction Equipments Parts

II. Company History

Our passion leads
you to succeed!!



1991. 07	Company establishment
2004. 05	Established Hyundai Metal Corporation company
2005. 02	Installed ERP(Enterprise Resource Planning) system
2006.02	Acquired ISO 9001, ISO14001 Certification
2007.11	Changed company name to Hyundai TMC
2008.07	Installed Plano Miller 1 st machine(6x5.5m)
2009.02	Installed 2 x DUPLEX BORING MACHINE
2009.10	Selected Technology Innovation BIZ company by government
2011. 02	Installed 2 x WELDING ROBOT machine
2011. 11	Received 20 M dollars export Award
2012. 05	Received President's award for contributing enterprise development
2012. 09	Start SPP business(UHR Boom & Arm, forestry machine,)

III. Front View of Factory Building

Our passion leads
you to succeed!!



III. Factory Layout

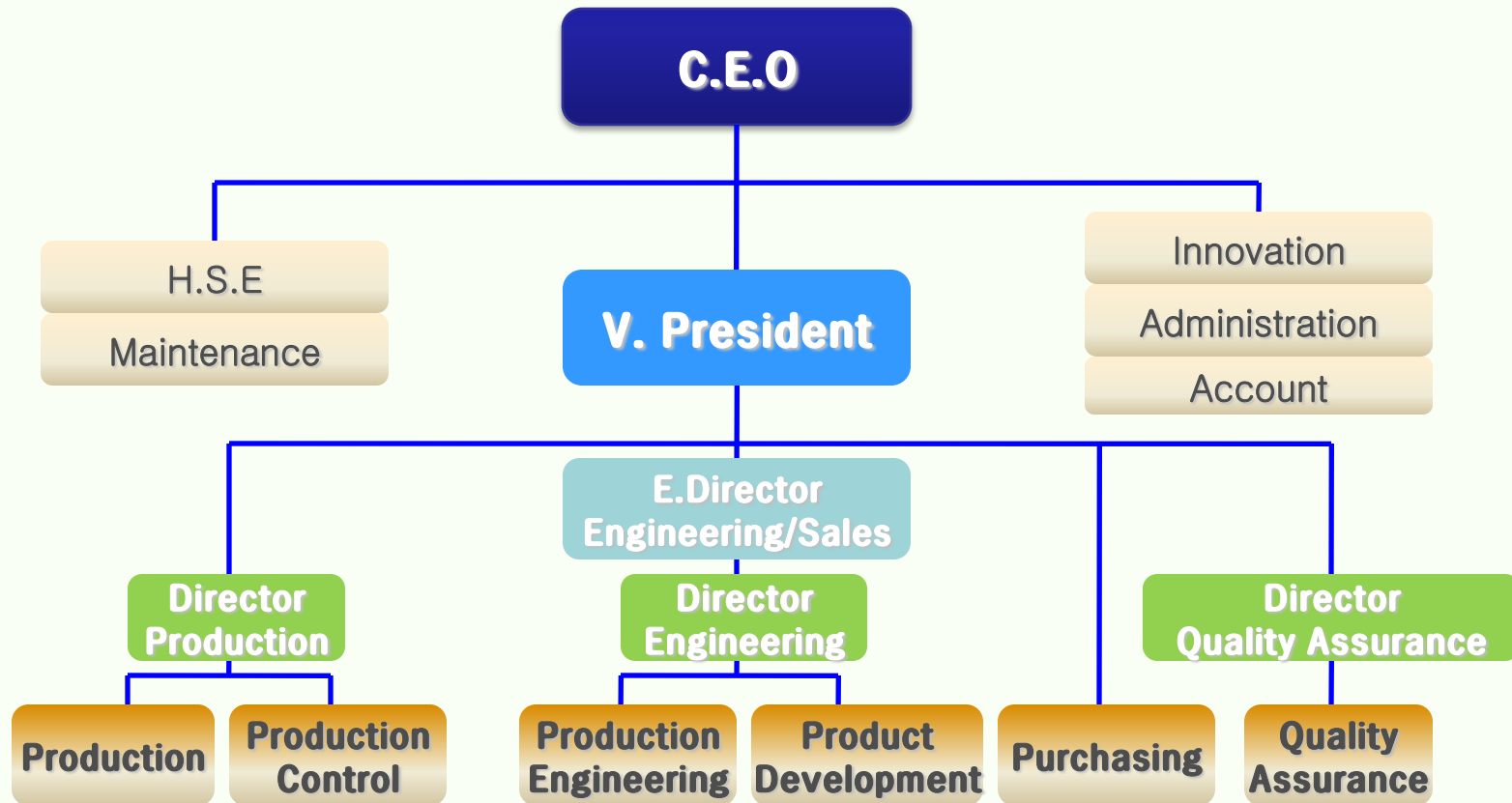
Our passion leads
you to succeed!!



Gatehouse

IV. Organization

Our passion leads
you to succeed!!



	Staff		Workers	Total
Employee	R&D/ Engineer	Officer	74	104
	11	19		

V. Group Core Value and Business area

Our passion leads
you to succeed!!



VI. Turnover

Our passion leads
you to succeed!!



VII-1. Special Purpose Products(1/7)

Our passion leads
you to succeed!!



Ultra High Reach Demolition



Digging Boom
for UHR machine



38TON UHR Boom & Arm

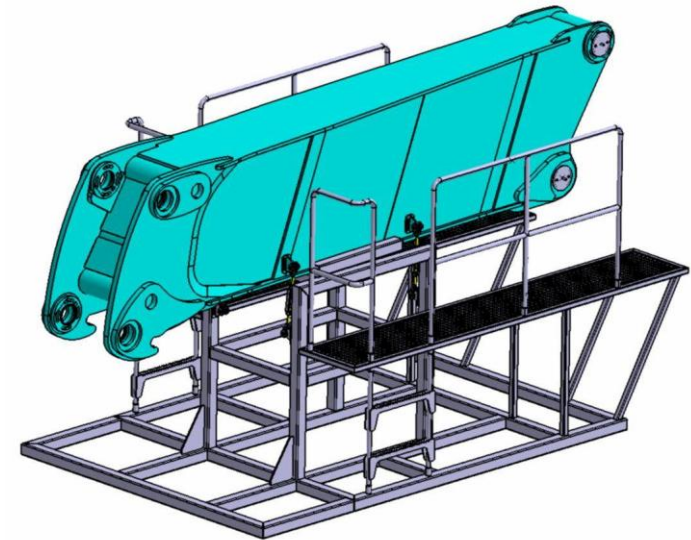
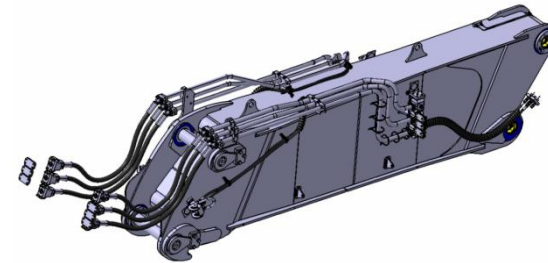
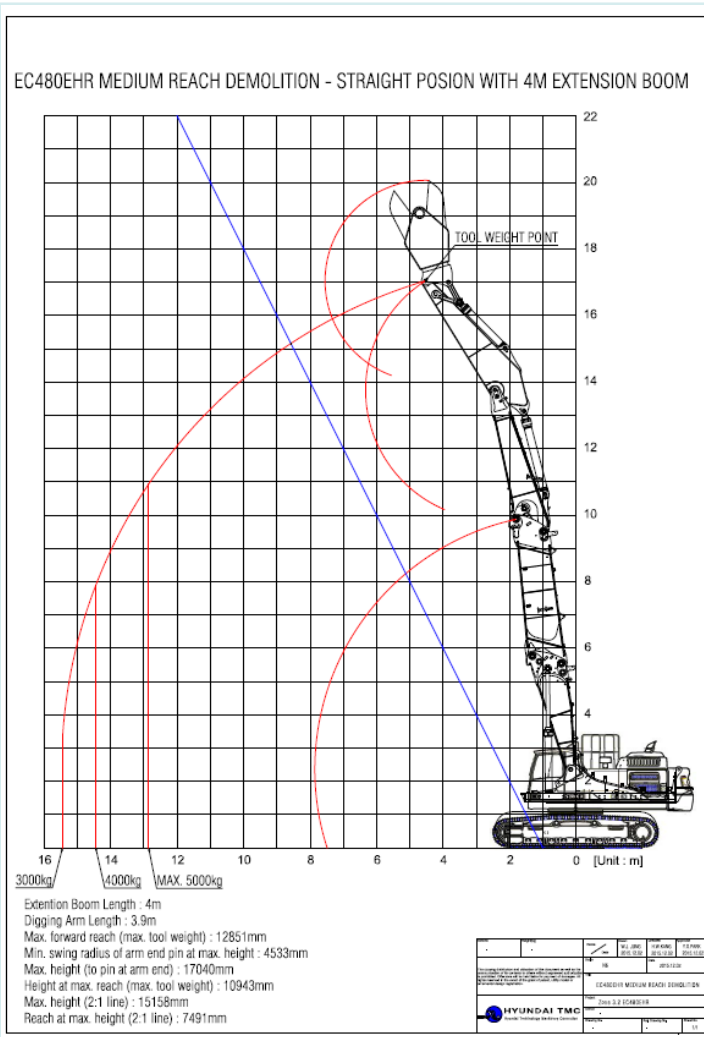


48TON UHR Boom & Arm

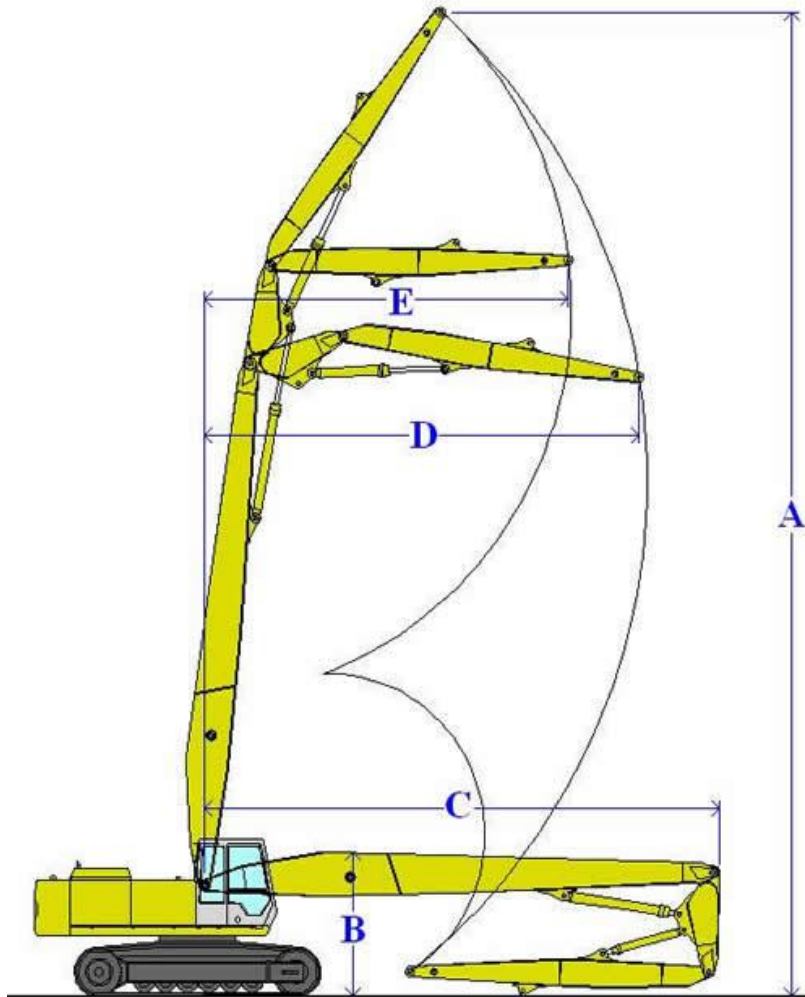


70TON UHR Boom & Arm

EC480EHR Extension boom for middle reach demolition

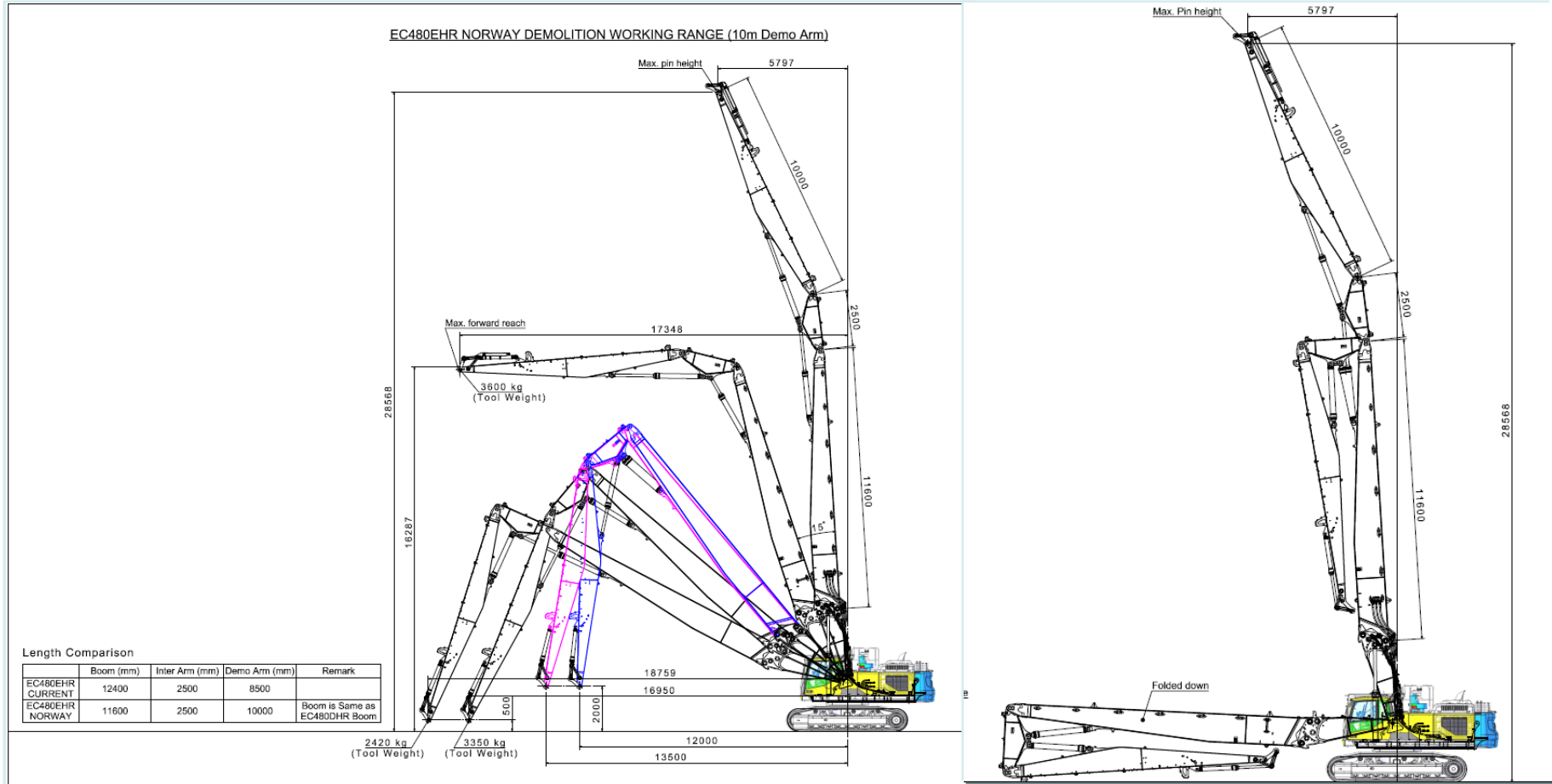


EC380/EC480DHR High Reach Demolition for APAC



*Plan to development on 2016

EC480DHR High Reach Demolition for Norway



*Plan to development on 2016

VII-1. Special Purpose Products(2/7)

Our passion leads
you to succeed!!



Forestry machine modification



Harvester application



Log Loader application



Forestry cab(OPS,FOG,ROPS)



Road Builder application



Shovel Logging for NZ

VII-1. Special Purpose Products(3/7)

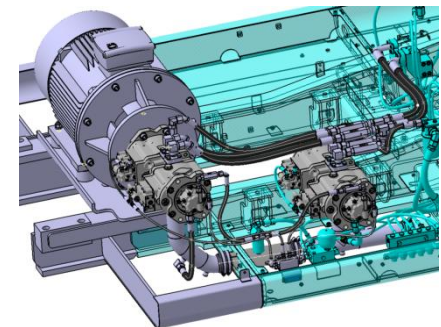
Our passion leads
you to succeed!!



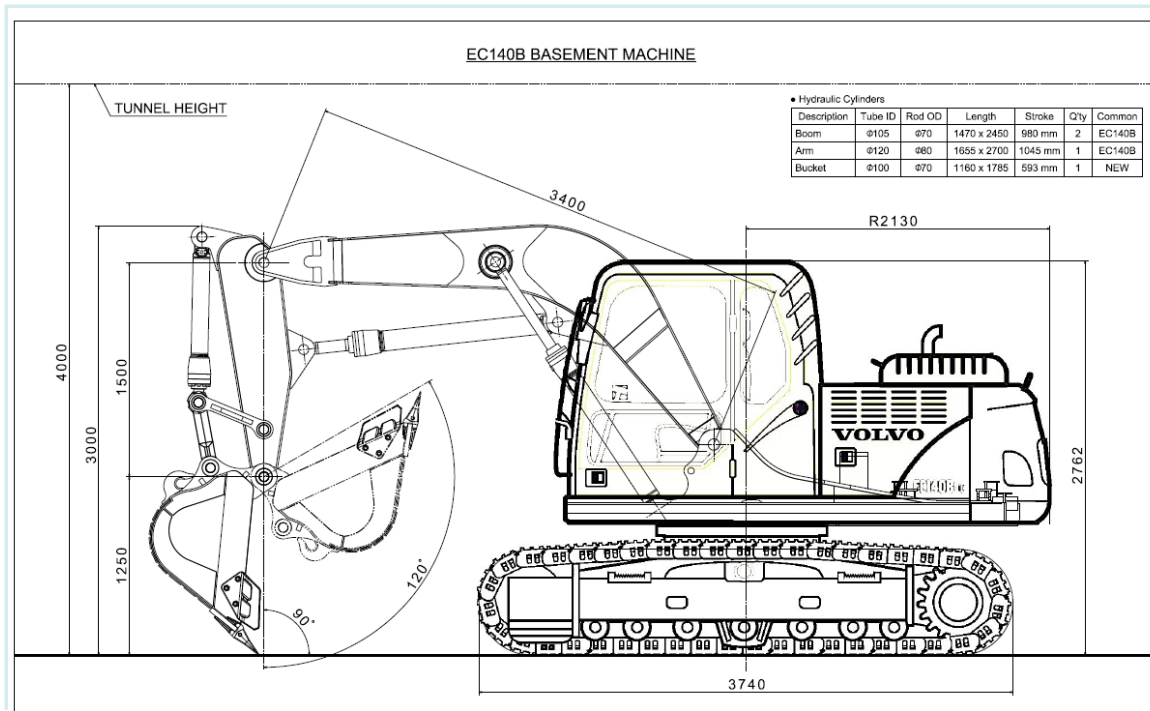
Electric Excavator



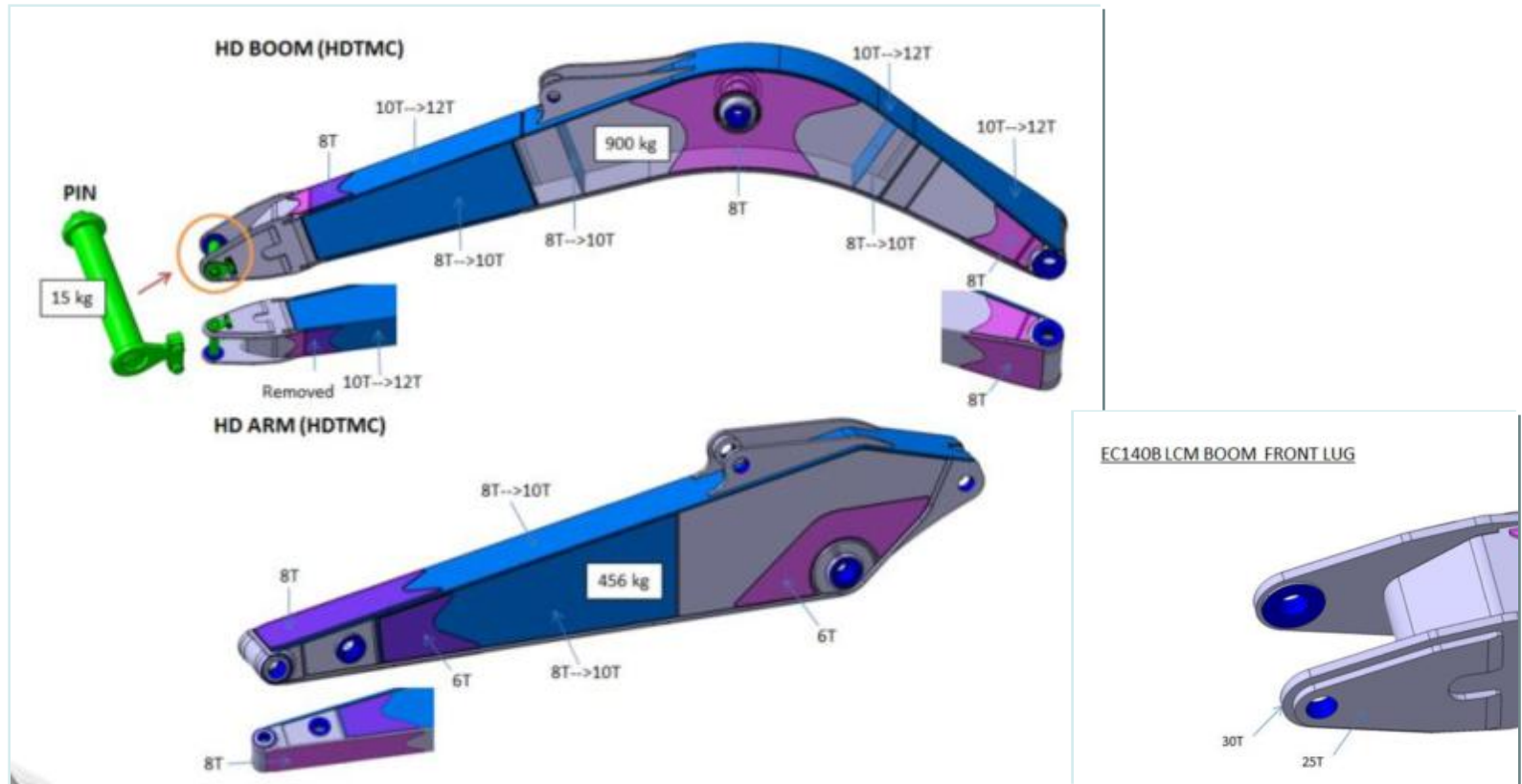
Item	Specification	Detail Description
Motor	160kw,3phase,4poles,380V 132kw,3phase,4pole,380V	F Class Insulation,IP55 Grade Protection,HYOSUNG Option
Main Pump	K5V160DT,FULUTEK	Volvo genuine parts
Coupling		Volvo genuine parts
Hyd Line Combination		6 line check valves combination type
Hyd positive pilot control		Pilot check valve block combination type
Control Panel	3 pannels	Main pannel, Reactor pannel, Instrument pannel
Motor Control System	Reactor type	Option: Y-D type, SCR type
Safety Function		Maximum reach close alarm Maximum reach power cutting system Shortage protection to prevent eletric shock accident Overload protection
Instrument Pannel		Ampere meter Power on green lamp Power off red lamp Emergency stop switch Power on/off switch Buzzer Select Switch-Engine/Motor
Aircon system		Single type : install elec motor to drive aircon compressor
Heater		Dual type : use normal electric heater.
Transformer		380V to 220V
Battery Charger		Automatic electric charger
Ground Pole		Height : 12.5m, safety guarding ladder, 180degree limited swing
Machine Pole		360degree contineous swing swivel joint
CWT	2500KG	Dual type: special CWT
Power Line	3 lines,90Sq,	
Working radius	25~35m	25m,35m option



Ready to EC140B Basement machine boom arm production



Ready to EC140B Forestry boom arm production



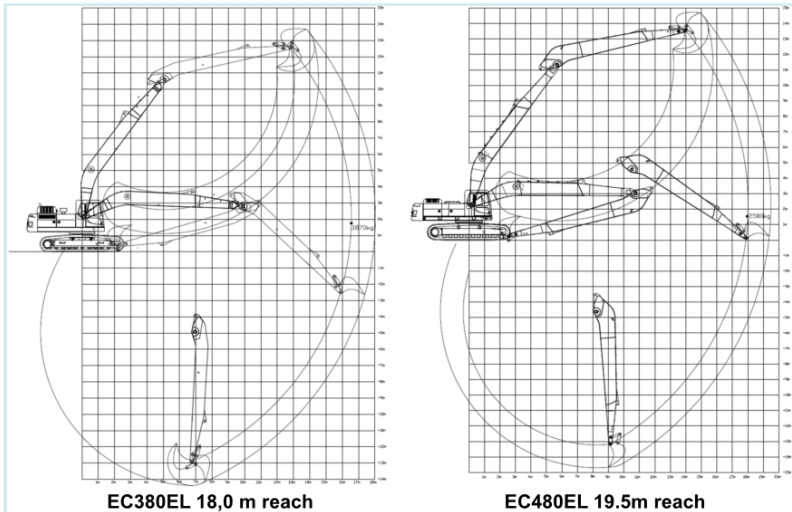
Front Lug (55mm) (+5mm against Hitachi)

VII-1. Special Purpose Products(6/7)

Our passion leads
you to succeed!!



Long Reach Boom Arm

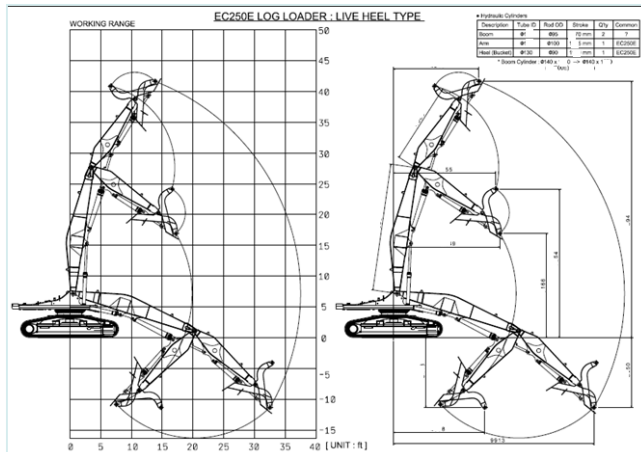
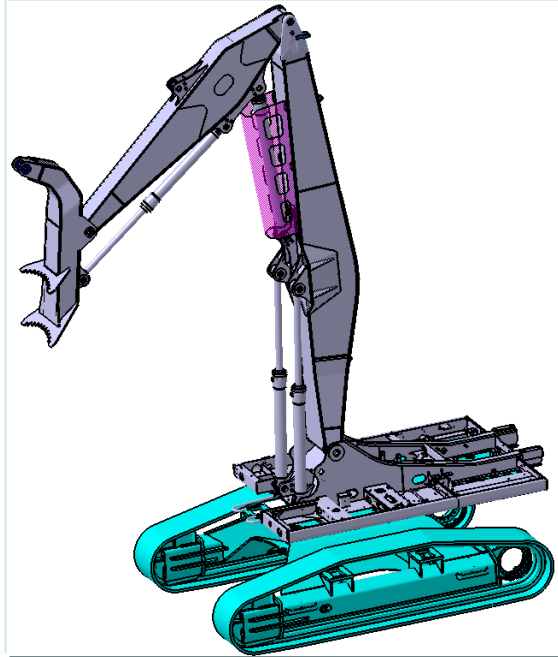


VII-1. Special Purpose Products(7/7)

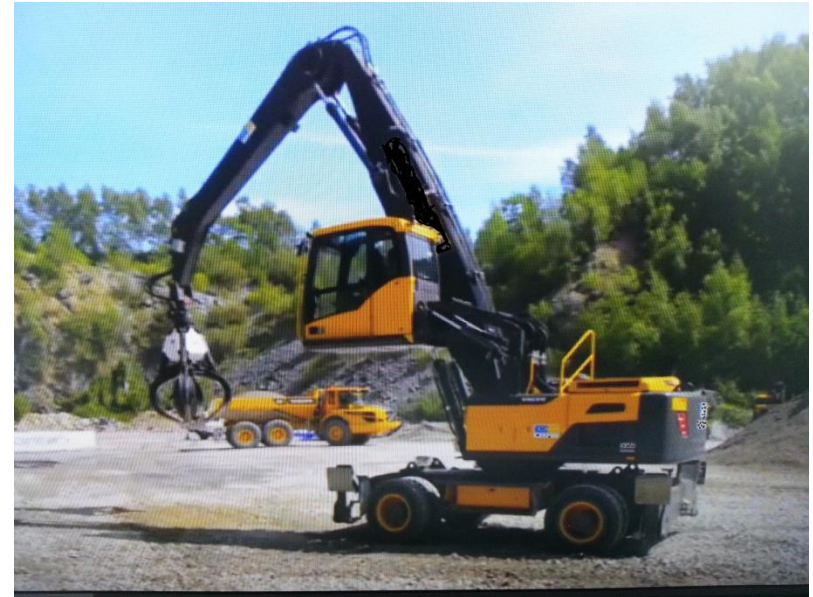
Our passion leads
you to succeed!!



Log Loader Boom Arm



Material Handler

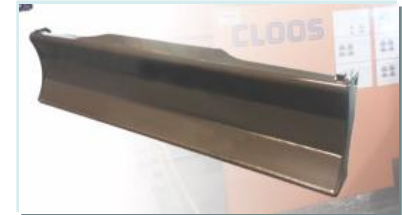


VII-2. Part Products

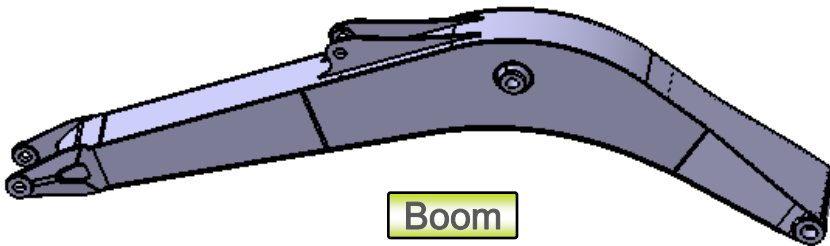
Our passion leads
you to succeed!!



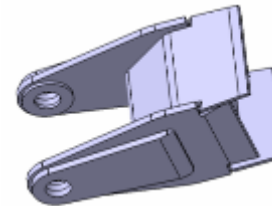
Outrigger assembly



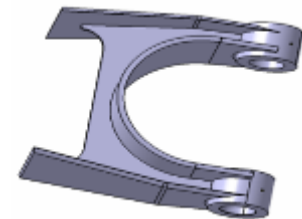
Dozer Blade



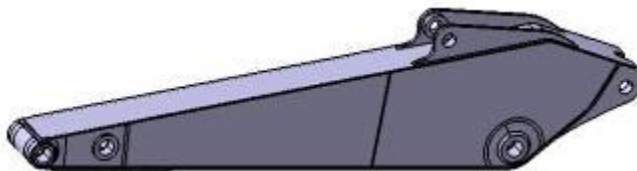
Boom



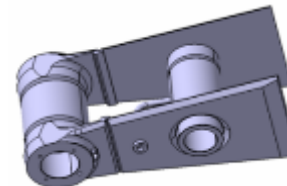
Front Lug



Rear Bearing



Arm



Front Bearing



TM Support

VIII. Facilities(1/2)

Our passion leads
you to succeed!!



Plano Miller



280T CNC Floor Boring M/C



130F DUFLEX BORING M/C



				Facilities List
No	Equipment Name	Size	Qty'	Maker
1	PLANO MILLER	5500*6000*14500	1	INGERSOL / WACO
2	PLANO MILLER	4800x5000x17500	1	WASI / POREBA -building now
3	280T CNC FLOOR BORING M/C	5000*18000*1200	1	Japan, MITSUBISHI
4	200T NC FLOOR BORING M/C	4000*12000*2000	1	Czech, SKODA
5	DUFLEX BORING M/C 130F	HKDB-130F	2	Hankook Machinery
6	140T FLOOR BORING M/C	3000*6000*800	1	KIA Heavy Industry
7	130T NC TABLE BORING M/C	1800*3000*800	1	Daewoo Heavy Industry
8	NC MILLING M/C	900*3400*H900	1	Chulsan
9	MILLING	850*1800*H600	2	Daewoo Heavy Industry

VIII. Facilities(2/2)

Our passion leads
you to succeed!!



Welding Robot



Tack welding fixture



Laser Cutting M/C, 4.0KW



Facilities List

No	Equipment Name	Size	Qty'	Maker
1	Welding Robot	QRC350	2	CLOOS
2	Tack welding fixture Long Boom &Arm	2000*3000*15000	1	Samwoo Tech
3	LASER CUTTING M/C 4KW	2.8M*8M*20T	1	TRUMP
4	LASER CUTTING M/C 4KW	2.5M*8M*25T	1	Swiss, BY STRONIC
5	LASER CUTTING M/C 3.5KW	3.1M*32M*20T	2	Japan, TANAKA
6	LASER CUTTING M/C 2.7KW	1.5M*3M*20T	1	Swiss, BY STRONIC
7	LASER CUTTING M/C 3.5KW	1.5M*3M*20T	1	Swiss, BY STRONIC
8	CNC CUTTING M/C	6T*5'*10'	1	Germany

Tae Kyung Heavy Industry



Ballast Water Management



Air vent head



Kwang San

Heating Coil



Crankcase Relief Valve



Expansion Joint



Pipe Spool piece

HIMCO



Front View of TKHI Factory Building



Area: 71,000 m²